

St Blasius
Shanklin C of E Primary School
Academy Trust



NEWSLETTER NO. 14 - 13th December 2013

Nativity - The Very Hopeless Camel

Well done to all the children for the Nativity play this week The Very Hopeless Camel. Year 3 and 4 were the lead this year with Reception as Angels, Year 1 as Shepherds, Year 2 were Kings, and Years 5 and 6 formed the choir.

Both performances were well attended, and we would like to thank everyone involved with putting on this production, with a special mention to Ms Powell and Ms Jackson. A very big thank you to all the parents and family who came and supported the performances, and provided costumes. You have given us a brilliant and traditional start to the Christmas season.

We do appreciate that some parents were disappointed not to receive their first choice of tickets for performances, and for this we apologise. We have to adhere to Fire Regulations which limits the amount of people we are allowed to have in the hall, and this is also the reason for smaller siblings attending also needing tickets.

In future when productions involve the whole school, we will consider having 3 performances which hopefully will solve the problem.

Christmas Craft Session

On Tuesday 10th December Reception Class had a Christmas craft session. Mrs Morey and the Reception team would like to thank all the parents who came to help. The children all enjoyed the session immensely.

Christmas Party Monday 16th December

To ensure a varied selection of party food, we are requesting that children in Reception, Year 1 and 2 bring cakes or chocolate biscuits, Year 3 and 4 bring cooked sausage rolls or cocktail sausages and Year 5 and 6 bring crisps or other savoury snacks.

Party clothes - Please send your child/children to school with their party clothes in a named carrier bag, they will change into them after lunch. Party games will be in their classes and then the children will have their party tea in the Hall, after which there might be a surprise visitor!

Christmas Dinner Tuesday 17th December

Thank you to everyone that pre-booked a Christmas dinner. Just a reminder that if a dinner has not been booked for that day, a packed lunch will need to be provided from home.

Christingle 18th December

The whole school will be attending our Christingle Service, which this year will be held at St Blasius Church at 1.30pm. Parents are invited to attend, but please note that due the size of the church, some of the congregation may have to stand.

Nativity at St Blasius Church

A few of our children will be attending church on Sunday 15th December at 10.15 for a small Nativity which is part of a Christening service at 10.15. Everyone is welcome to attend.

Christmas Post Box

The Christmas Post Box is in the corridor by the school hall. Would you please ensure that cards have first and last names on them, as well as the Year Group.

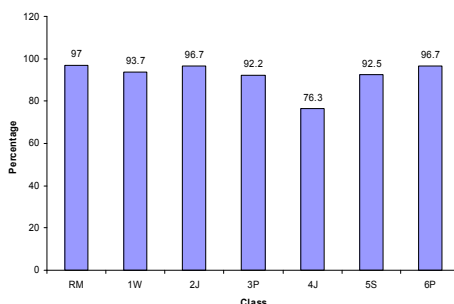
Piano

We have an upright piano that the school no longer requires. If you know of anyone who would like it, at no cost, please contact the School Office.

Attendance

Whole School attendance for the week ending 6th December 2013 was: 95.3%

Individual Year Group attendance was:



Congratulations to Year R for the best attendance with 97 %.

Menu - Week commencing 16th December

Monday:	Main - Beef Bolognaise with pasta, Vegetarian sausages with mashed potato and gravy, Broccoli, sweetcorn, cucumber and tomato salad. Dessert - Steamed syrup pudding with custard.
Tuesday:	Main - Roast chicken or lentil roast with roast or mashed potatoes gravy, cabbage and swede. Apple, cucumber and celery salad. Dessert - crunchy cookie and milk.
Wednesday:	Main - Sausage meat and Cheddar cheese plait with wedges, vegetable pasta bake, green beans and sweetcorn, Carrot and Sultana salad. Dessert - apple cracknel and ice-cream.
Thursday:	Main - Chicken curry with rice or cheesy jacket potato, carrots and broccoli, vegetable sticks. Dessert - fruit salad.
Friday:	Main - Fish fingers and chips, baked beans and peas. Dessert - marble cake with chocolate sauce.

Important Dates for 2013 - 2014

Monday 16th December - Christmas parties - details above
Tuesday 17th December - Christmas dinner
Wednesday 18th December - Christingle Service - details above
Thursday 19th December - End of term celebration Assembly 9.30
Thursday 19th December - Last day of term for children - normal finish time of 3pm
Friday 20th December - Staff development day - school closed to children
Saturday 21st December - Sunday 5th January - Christmas Holidays
Monday 6th H=January 2014 - First day of Spring Term
Friday 31st January 2014 - Staff development day - school closed to children
Monday 3rd February 2014 - Second instalment due for Year 6 trip
Saturday 15th February 2014 - Sunday 23rd February - Spring Half Term
Wednesday 5th March 2014 - Final instalment due for Year 5 trip
Wednesday 2nd April 2014 - Final instalment due for Year 6 trip
Saturday 5th April 2014 - Monday 21st April - Easter Holidays
Monday 5th May 2014 - May Day Holiday
Saturday 24th May 2014 - Sunday 1st June Spring Half Term
Friday 27th June 2014 - Staff development day - school closed to children
Wednesday 23rd July 2014 - last day of summer term 2014

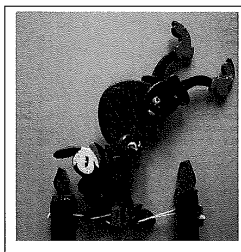
PAST PLAY:

TOYS FROM THE PAST

Sessions for parents and children on

FRIDAY 3RD JANUARY 2014

at



CARISBROOKE CASTLE MUSEUM

We are offering a morning (10-12pm) and an afternoon (1-3pm) session.

The 2 hour programme will include:

- viewing the exhibition of toys
- a demonstration of original moving toys
- the chance to handle reproduction toys
- learning how to make a simple moving toy out of cardboard

Places are limited and booking is essential.

Ideal for families with children aged between 4-11 years. These sessions are free to pre-booked families courtesy of the Isle of Wight Heritage Service, English Heritage and Carisbrooke Castle Museum.

Email hes@iow.gov.uk or ring 0781 3021486 to book.

Short Breaks

GET INVOLVED!

IN FUN ACTIVITIES FOR CHILDREN AND YOUNG PEOPLE
WITH DISABILITIES AND/OR ADDITIONAL NEEDS
WITH THE NEW SHORT BREAKS GATEWAY CARD

- YOUTH CLUBS
- SAILING
- ART AND CRAFT
- HORSE RIDING
- DANCE
- AND MUCH MORE...



To participate in these activities you will need to apply for a Short Break's gateway card.

For a complete list of activities, as well as times and dates, please see our quarterly activity guide.

The gateway card is for children and young people who:

- have a disability and/or additional needs and may require support to participate in leisure and recreational activities;
- are aged between 0 and 19 years old;
- live on the Isle of Wight and/or attend a school on the Isle of Wight.

For more information and apply for a gateway card go to www.iwight.com/shortbreaks

or visit the Family Information Zone (FIZ), 11 Orchard Street, Newport Isle of Wight PO30 1JZ. Tel: 01983 821999.

